

PMG1-S3 (CYPM1311) DRP REFERENCE DESIGN

| CONTENTS | |
|----------|--|
| PAGE | DESCRIPTION |
| 01 | TITLE & TABLE OF CONTENTS |
| 02 | PMG1-S3 CONTROLLER |
| 03 | STEP DOWN REGULATORS |
| 04 | PD REGULATOR |
| 05 | VBUS PROVIDER/CONSUMER FET AND TYPE-C CONNNECTOR |
| 06 | USB SUPERSPEED AND DISPLAY PORT MUX (Optional) |

Legal Disclaimer :

The information given in this document shall in no event be regarded as a guarantee of conditions or characteristics. With respect to any examples or hints given herein, any typical values stated herein and/or any information regarding the application of the device, Infineon Technologies hereby disclaims any and all warranties and liabilities of any kind, including without limitation, warranties of non-infringement of intellectual property rights of any third party.



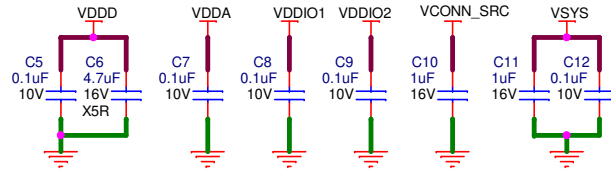
SCH Title : PMG1-S3 (CYPM1311) DRP REFERENCE DESIGN

Page Title: TITLE AND CONTENTS

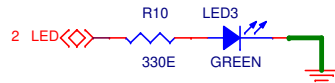
| | | | | |
|------------------------------|-----------------|--------------|-------------|-----|
| Size | Document Number | Drawn By | Approved By | Rev |
| A4 | XXX-xxxx-xx | VIKU | PRVE | 01 |
| Date: Monday, April 04, 2022 | | Sheet 1 of 6 | | |

PMG1-S3 CONTROLLER

DECOUPLING CAPACITORS



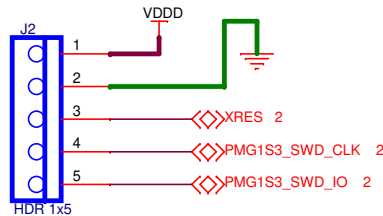
USER LED



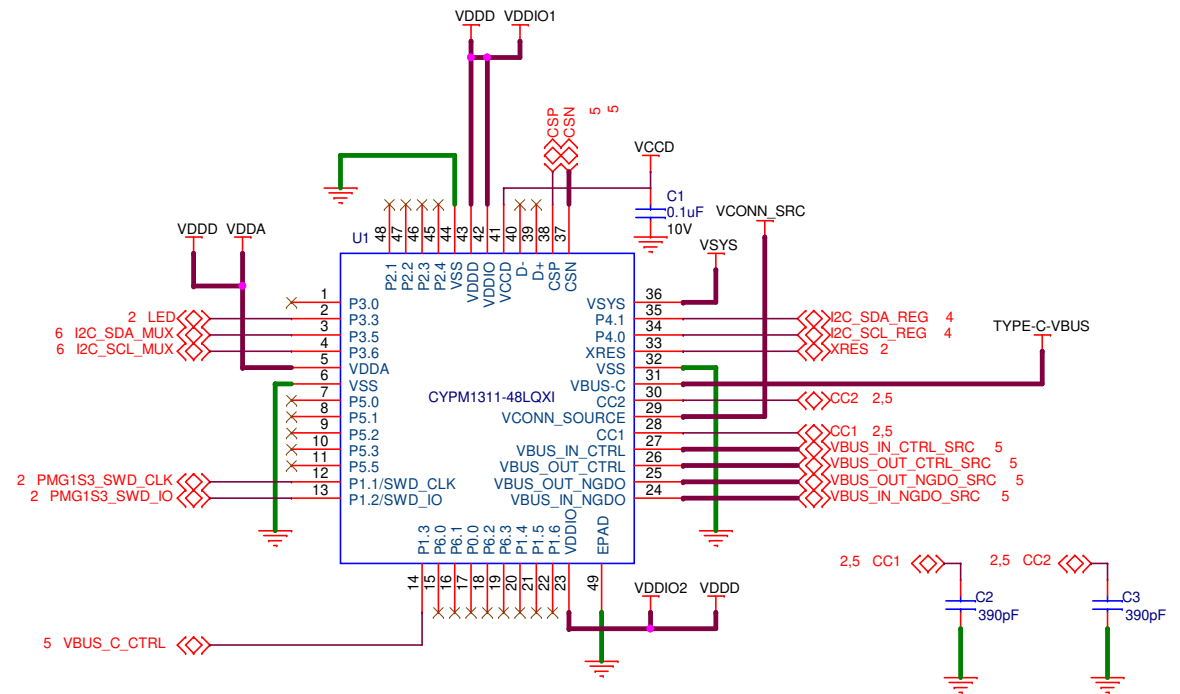
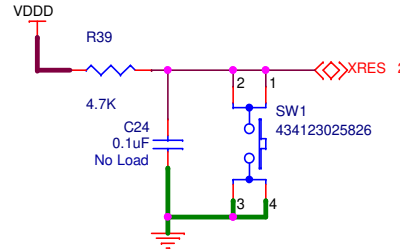
VSYS AND VCONN_SRC



SWD PROGRAMMING HEADER



RESET BUTTON



Legal Disclaimer :

The information given in this document shall in no event be regarded as a guarantee of conditions or characteristics. With respect to any examples or hints given herein, any typical values stated herein and/or any information regarding the application of the device, Infineon Technologies hereby disclaims any and all warranties and liabilities of any kind, including without limitation, warranties of non-infringement of intellectual property rights of any third party.

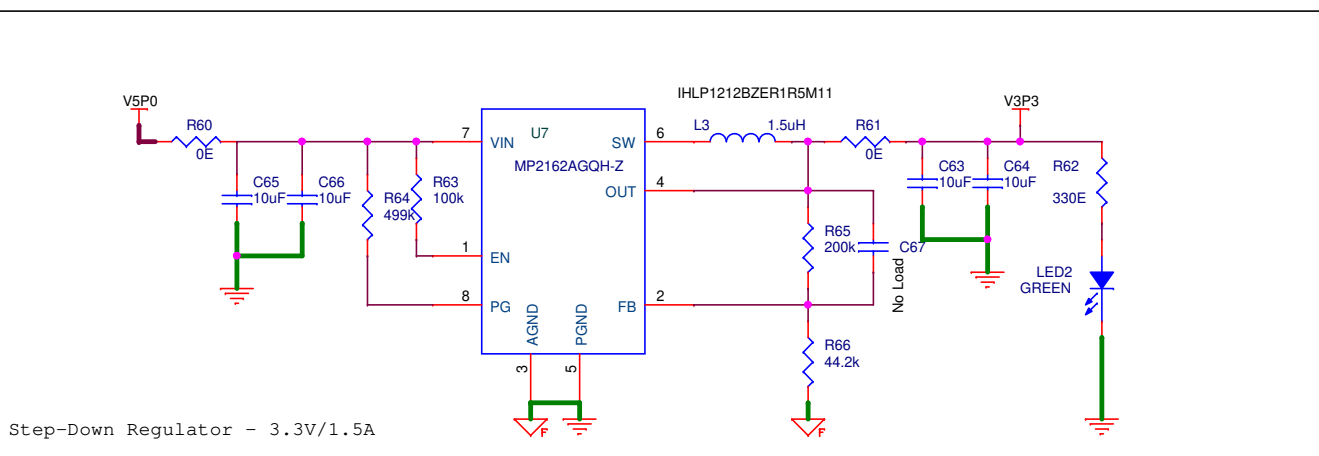
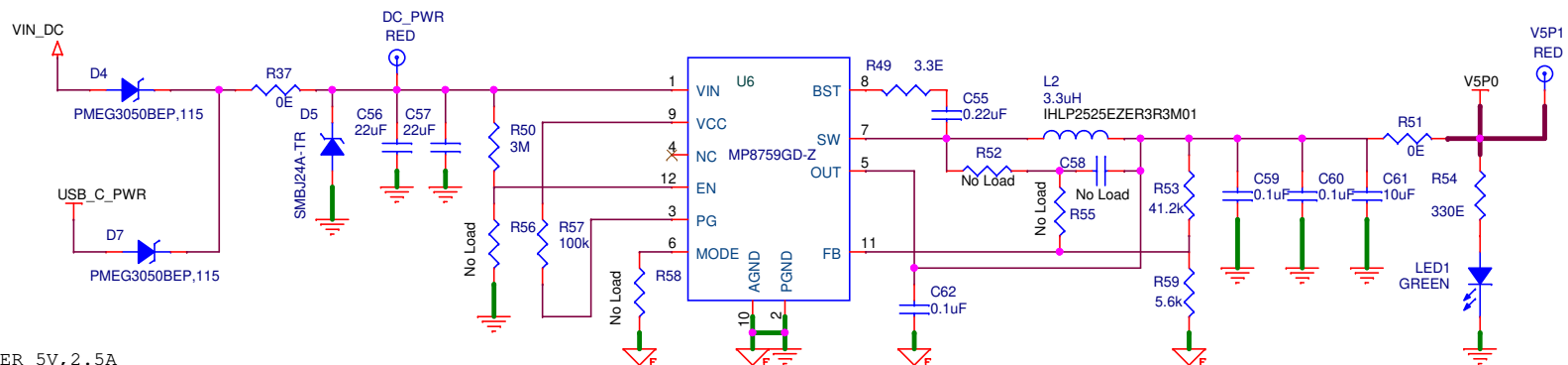


SCH Title : PMG1-S3 (CYPM1311) DRP REFERENCE DESIGN

Page Title : PMG1-S3 CONTROLLER

| Size | Document Number | Drawn By | Approved By | Rev |
|-------|------------------------|----------|-------------|--------|
| A4 | XXX-xxxxx-xx | VIKU | PRVE | 01 |
| Date: | Monday, April 04, 2022 | | Sheet | 2 of 6 |

STEP DOWN REGULATORS



Legal Disclaimer :

The information given in this document shall in no event be regarded as a guarantee of conditions or characteristics. With respect to any examples or hints given herein, any typical values stated herein and/or any information regarding the application of the device, Infineon Technologies hereby disclaims any and all warranties and liabilities of any kind, including without limitation, warranties of non-infringement of intellectual property rights of any third party.

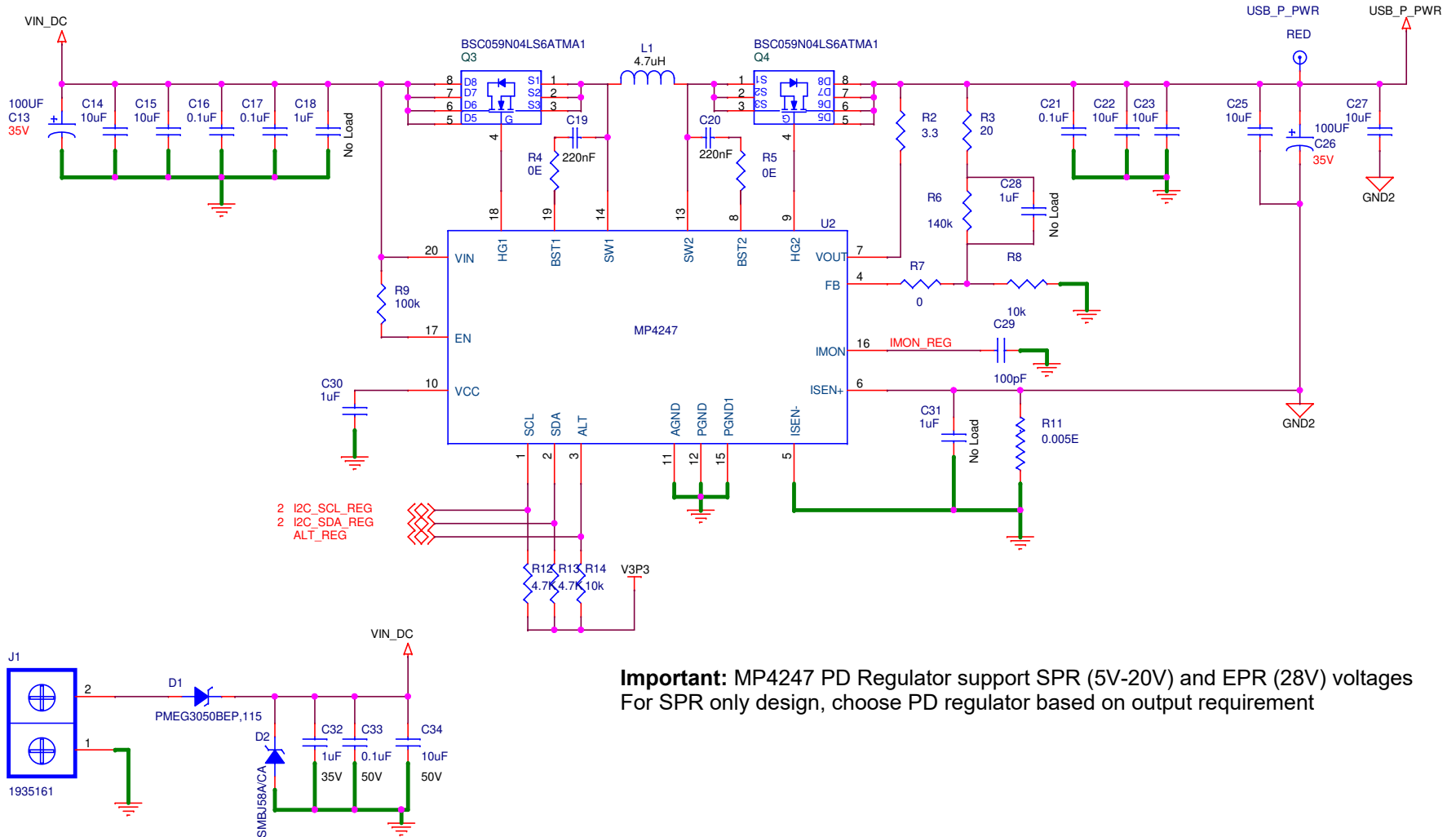


SCH Title : PMG1-S3 (CYPM1311) DRP REFERENCE DESIGN

Page Title: STEP DOWN REGULATORS

| Size | Document Number | Drawn By | Approved By | Rev |
|-------|------------------------|----------|-------------|--------|
| A4 | XXX-xxxx-xx | VIKU | PRVE | 01 |
| Date: | Monday, April 04, 2022 | | Sheet | 3 of 6 |

PD REGULATOR (EPR up to 28V)



Important: MP4247 PD Regulator support SPR (5V-20V) and EPR (28V) voltages
For SPR only design, choose PD regulator based on output requirement

Legal Disclaimer :

The information given in this document shall in no event be regarded as a guarantee of conditions or characteristics. With respect to any examples or hints given herein, any typical values stated herein and/or any information regarding the application of the device, Infineon Technologies hereby disclaims any and all warranties and liabilities of any kind, including without limitation, warranties of non-infringement of intellectual property rights of any third party.



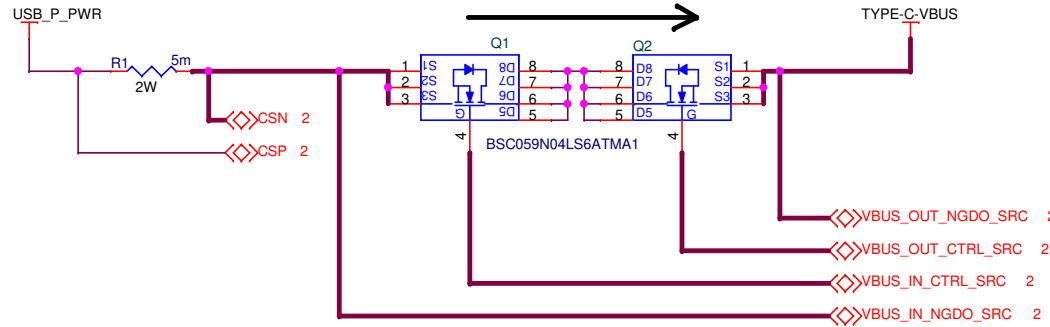
SCH Title : PMG1-S3 (CYPM1311) DRP REFERENCE DESIGN

Page Title: PD REGULATOR

| Size | Document Number | Drawn By | Approved By | Rev |
|-------|------------------------|----------|-------------|--------|
| A4 | XXX-xxxx-xx | VIKU | PRVE | 01 |
| Date: | Monday, April 04, 2022 | | Sheet | 4 of 6 |

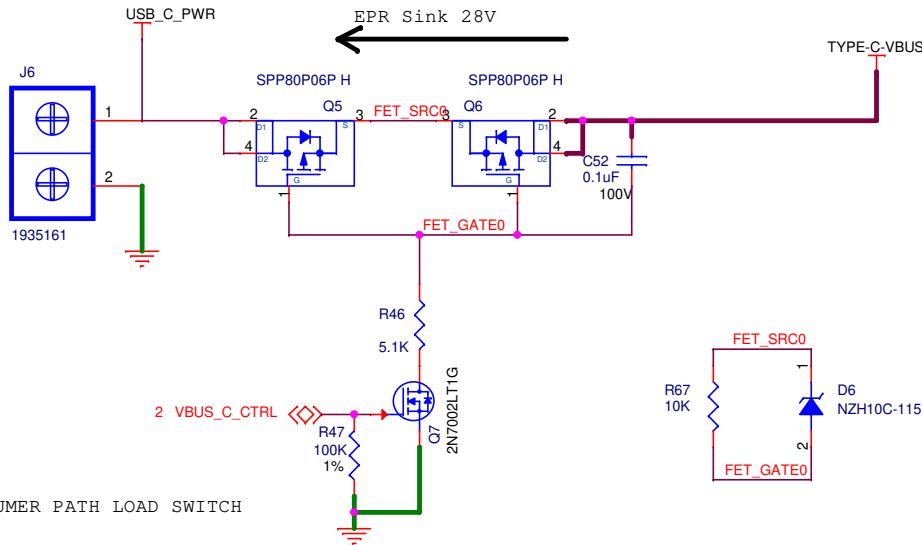
VBUS PROVIDER/CONSUMER FET AND TYPE-C CONNCTOR

SPR Source 5V, 9V, 15V, 20V / 5A
EPR Source 28V / 5A

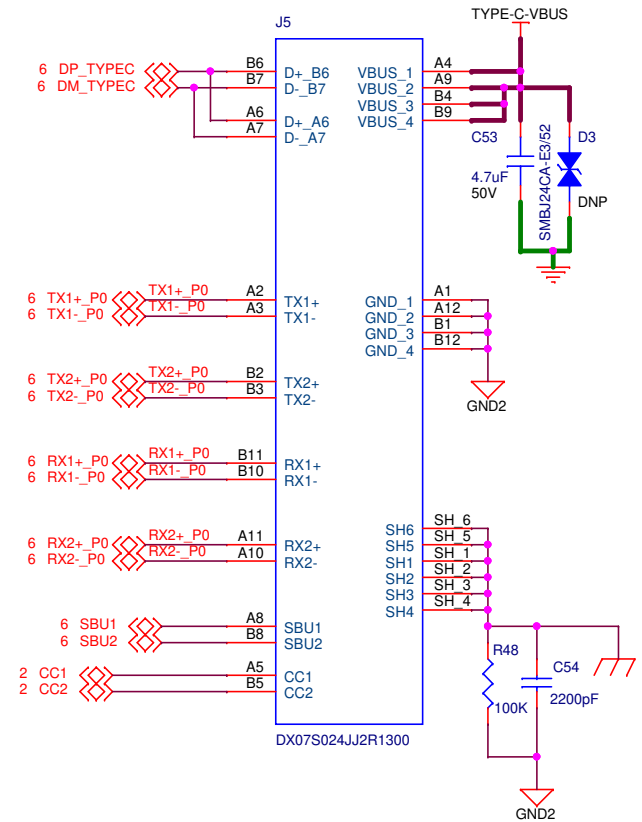


PROVIDER PATH LOAD SWITCH

SPR Sink 5V - 20V
EPR Sink 28V



CONSUMER PATH LOAD SWITCH



Legal Disclaimer :

The information given in this document shall in no event be regarded as a guarantee of conditions or characteristics. With respect to any examples or hints given herein, any typical values stated herein and/or any information regarding the application of the device, Infineon Technologies hereby disclaims any and all warranties and liabilities of any kind, including without limitation, warranties of non-infringement of intellectual property rights of any third party.



SCH Title : PMG1-S3 (CYPM1311) DRP REFERENCE DESIGN

Page Title: vBUS PROVIDER/CONSUMER FET AND TYPE-C CONNCTOR

| Size | Document Number | Drawn By | Approved By | Rev |
|-------|------------------------|----------|-------------|--------|
| A4 | XXX-xxxx-xx | VIKU | PRVE | 01 |
| Date: | Monday, April 04, 2022 | | Sheet | 5 of 6 |

USB SUPERSPEED AND DISPLAY PORT MUX (OPTIONAL)

The information given in this document shall in no event be regarded as a guarantee of conditions or characteristics. With respect to any examples or hints given herein, any typical values stated herein and/or any information regarding the application of the device, Infineon Technologies hereby disclaims any and all warranties and liabilities of any kind, including without limitation, warranties of non-infringement of intellectual property rights of any third party.

infineon

| SCH Title : PMG1-S3 (CYPM1311) DRP REFERENCE DESIGN | | | | |
|---|-----------------|--------------|-------------|-----|
| Page Title : USB SUPERSPEED AND DISPLAY PORT MUX (OPTIONAL) | | | | |
| Size | Document Number | Drawn By | Approved By | Rev |
| A4 | XXX-xxxxx-xx | VIKU | PRVE | 01 |
| Date : Monday, April 04, 2022 | | Sheet 6 of 6 | | |

USE, DISSEMINATION AND DISPLAY PORT MUX (OPTIONAL)

The information given in this document shall in no event be regarded as a guarantee of conditions or characteristics. With respect to any such information, Infineon Technologies hereby disclaims any and all warranties and liabilities of any kind, including without limitation, warranties of non-infringement of intellectual property rights of any third party.



SCH Title : PMG1-S3 (CYPM1311) DRP REFERENCE DESIGN

Page Title: USB SUPERSPEED AND DISPLAY PORT MUX (OPTIONAL)

| | | | | |
|------------|--|-------------------------|----------------------------|------------------|
| Size A4 | Document Number XXX-xxxxx-xx | Drawn By VIKU | Approved By PRVE | Rev 01 |
| Date: | Mondav. April 04, 2022 | | Sheet 6 of 6 | |